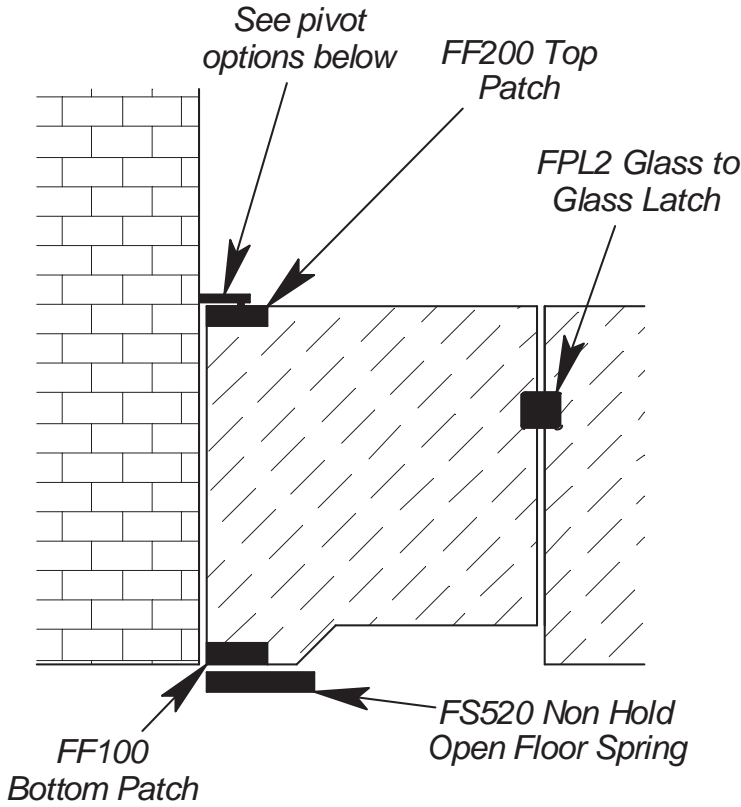


## Product Specification



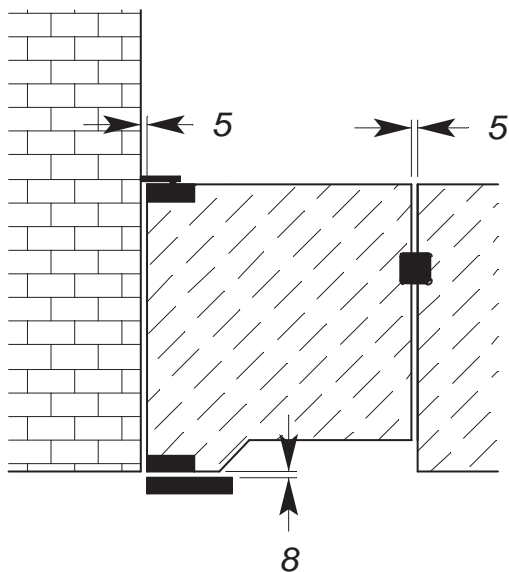
### Configuration No 2 FPF5 Glass to Wall Pivot with PL2 Glass to Glass Latch

#### Order the Following

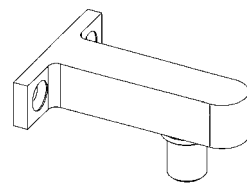
- 1 x FS520 Non Hold Open Floor Spring (see page 11)
- 1 x FF100 Bottom Patch Fitting (see page 12)
- 1 x FF200 Top Patch Fitting (see page 13)
- 1 x PL2 Glass to Glass Latch (see page 15)
- Select from the following pivots
- 1 x FPF5 Glass to Wall Pivot (see page 17)
- 1 x FPF5-VF Glass to Wall Pivot with Vertical Fixing (see page 18)
- 1 x FPF5-PF Glass to Wall Pivot for 50mm diam post (see page 19)

- #### Special Notes
1. In areas where water is present or likely, suitable sealing of the floor spring is required to prevent water from entering the cement box. See sealing compound on page 23.
  2. Suggest notch under gate to allow for services including hoses etc.
  3. Refer to AS 1926.1-1993 for design guidelines.

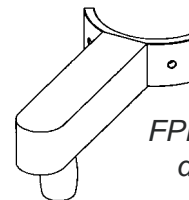
## Glass Clearances



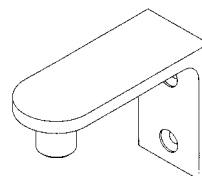
## Pivot Options



Standard FPF5 for walls and posts 60mm and wider (see page 17)



FPF5-PF for 50mm diameter posts (see page 19)



FPF5-VF for walls or smaller posts 30mm and wider (see page 18)