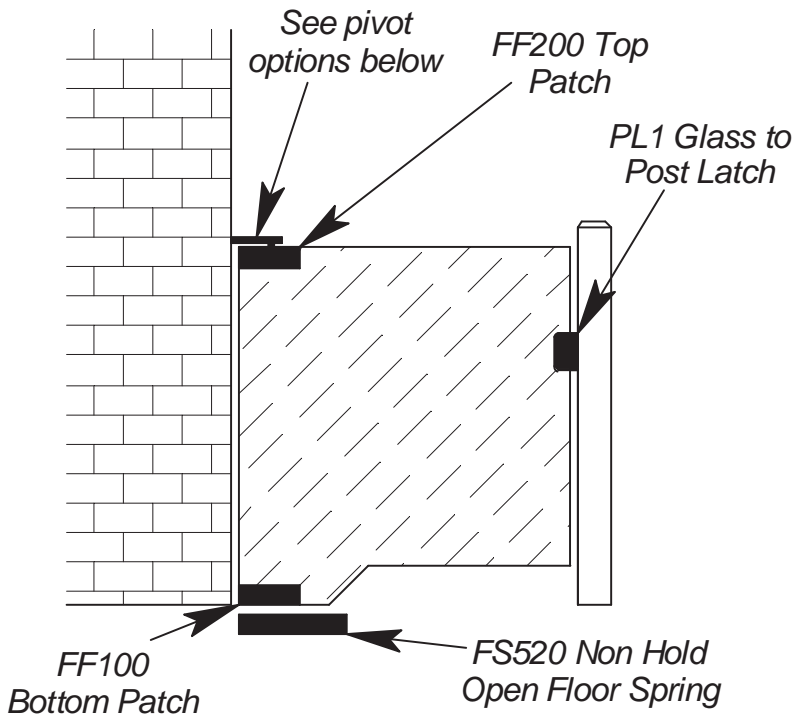
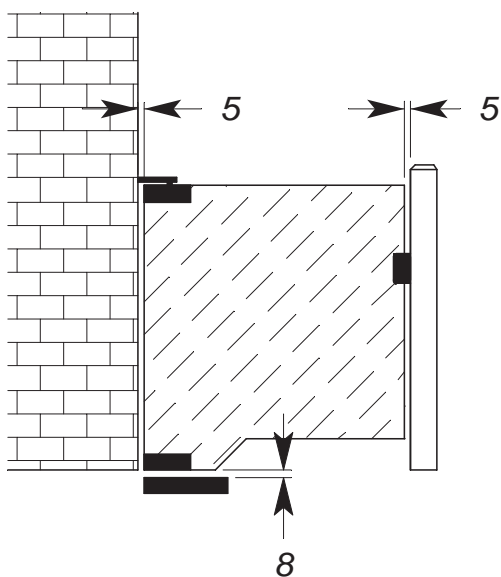


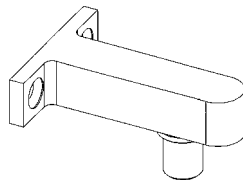
Product Specification



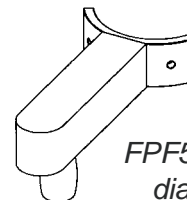
Glass Clearances



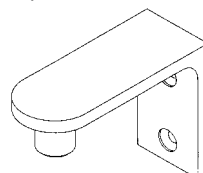
Pivot Options



Standard FPF5 for walls and posts 60mm and wider (see page 17)



FPF5-PF for 50mm diameter posts (see page 19)



FPF5-VF for walls or smaller posts 30mm and wider (see page 18)

Configuration No 1 FPF5 Glass to Wall Pivot with PL1 Glass to Post Latch

Order the Following

- 1 x FS520 IS Non Hold Open Floor Spring (see page 11)
- 1 x FF100 Bottom Patch Fitting (see page 12)
- 1 x FF200 Top Patch Fitting (see page 13)
- 1 x PL1 Glass to Post Latch (see page 14)
- Select from the following pivots
- 1 x FPF5 Glass to Wall Pivot (see page 17)
- 1 x FPF5-VF Glass to Wall Pivot with Vertical Fixing (see page 18)
- 1 x FPF5-PF Glass to Wall Pivot for 50mm diam post (see page 19)

Special Notes

1. Gate to be aligned to inside of post (pool side) opening outwards only. If alignment to centre of post is required, call FGS for options.
2. Magna receiver to be face fixed to inside of post along with stop to render gate single action opening outwards.
3. In areas where water is present or likely, suitable sealing of the floor spring is required to prevent water from entering the cement box. See sealing compound on page 23.
4. Suggest notch under gate to allow for services including hoses etc.
5. Refer to AS 1926.1-1993 for design guidelines.